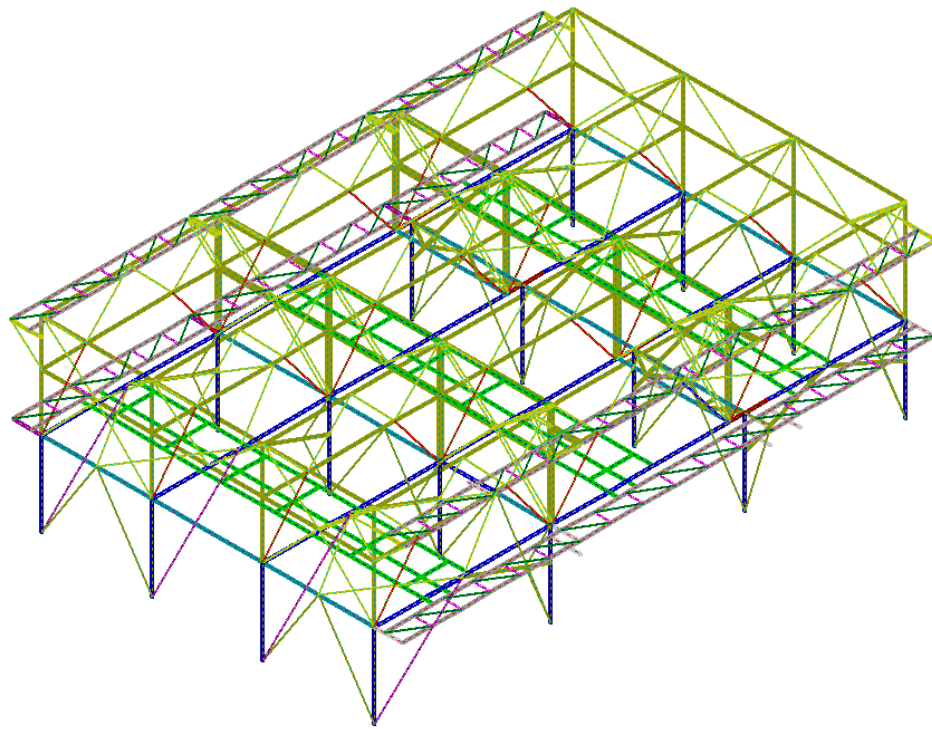


Comparison between Sargon (V8.42), NXNASTRAN and NEiNASTRAN - NORMAL MODES		
TEST 28	VALIDATION, CROSS CHECKS, RELIABILITY, BENCHMARK	Marco Croci 17/03/2008



	Sargon (Leda)	NX NASTRAN		NE NASTRAN	
Model Name	tes28.WSR	tes28000.dat		tes28.NAS	
Output file	tes28.dou	tes28000.f06		tes28.OUT	
	Frequency [Hz]	Frequency [Hz]	% errNX	Frequency [Hz]	% errNE
Mode 1	0,487749	0,487749	0,000	0,4877498	0,000
Mode 2	0,488034	0,488034	0,000	0,4880344	0,000
Mode 3	0,490429	0,490429	0,000	0,4904292	0,000
Mode 4	0,490752	0,490752	0,000	0,4907527	0,000
Mode 5	0,493760	0,493760	0,000	0,4937600	0,000
Mode 6	0,494072	0,494072	0,000	0,4940721	0,000
Mode 7	0,690581	0,690581	0,000	0,6905810	0,000
Mode 8	0,694335	0,694335	0,000	0,6943349	0,000
Mode 9	0,699030	0,699030	0,000	0,6990299	0,000
Mode 10	0,703953	0,703953	0,000	0,7039525	0,000

Model data

Degrees of freedom = 3366

Beam elements = 783

% errNX = (Sargon - NX) / NX * 100; % errNE = (Sargon - NE) / NE * 100